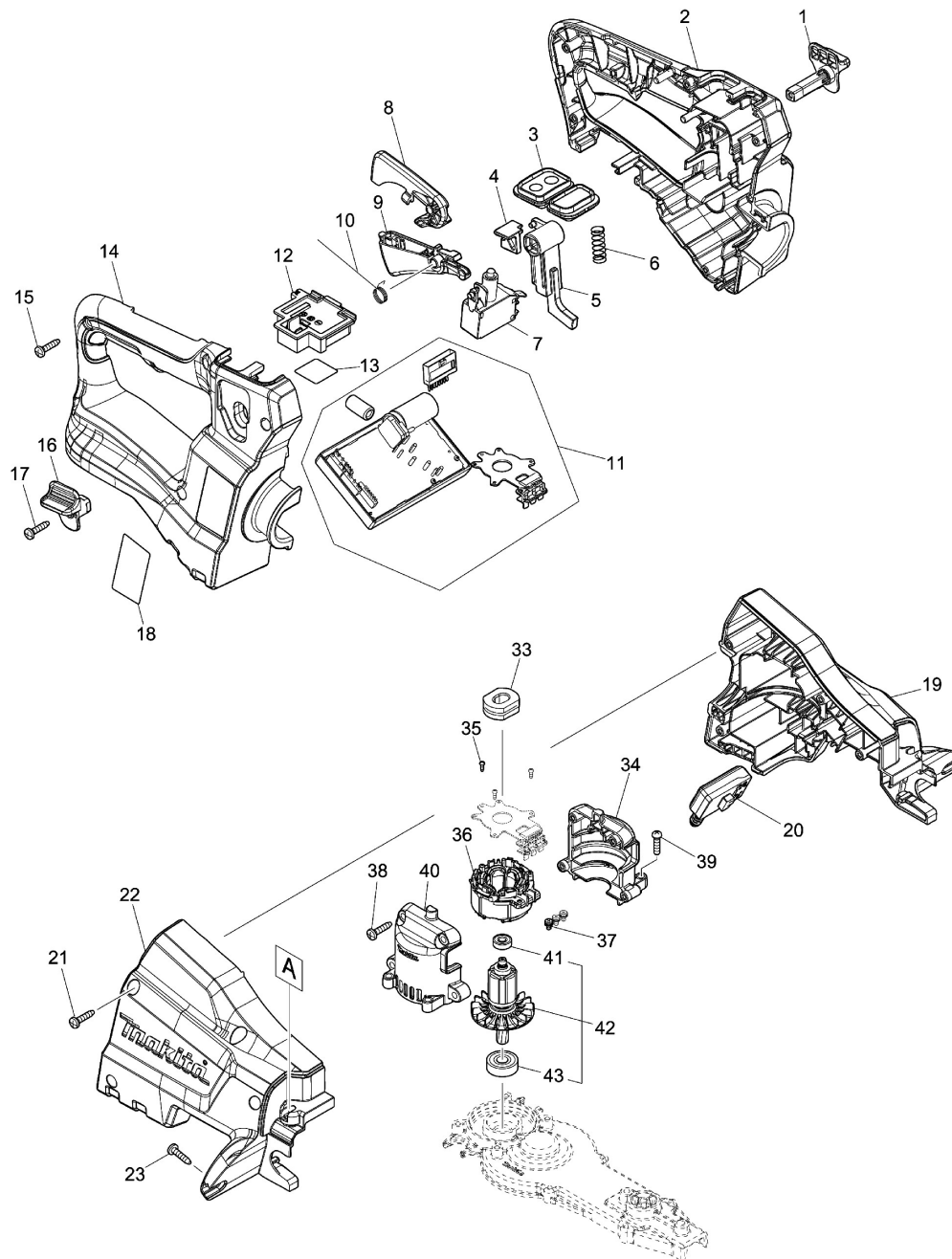


Model No.DUH601 600MM CORDLESS HEDGE TRIMMER



This exploded view diagram illustrates the assembly of a trimmer head. The main components are shown in their relative positions, with callouts for each part:

- 44, 45, 46, 47, 48, 49:** Components of the upper housing and spindle assembly.
- 50, 51, 52, 53, 54, 55, 56, 57, 58, 59, 60, 61:** Components of the lower housing and spindle assembly.
- 31, 32, 24, 25, 26:** Components of the trimmer head housing and guard.
- 27, 28, 29, 30:** Components of the trimmer head guard.
- 62, 63, 64, 65:** Components of the trimmer head guard.

The diagram shows the trimmer head (32) being inserted into the lower housing (52) and secured with a screw (61). The upper housing (45) is then attached to the lower housing (52) using a screw (50). The trimmer head guard (26) is then attached to the trimmer head (32) using a screw (24). The trimmer head guard (27) is then attached to the trimmer head guard (26) using a screw (28).