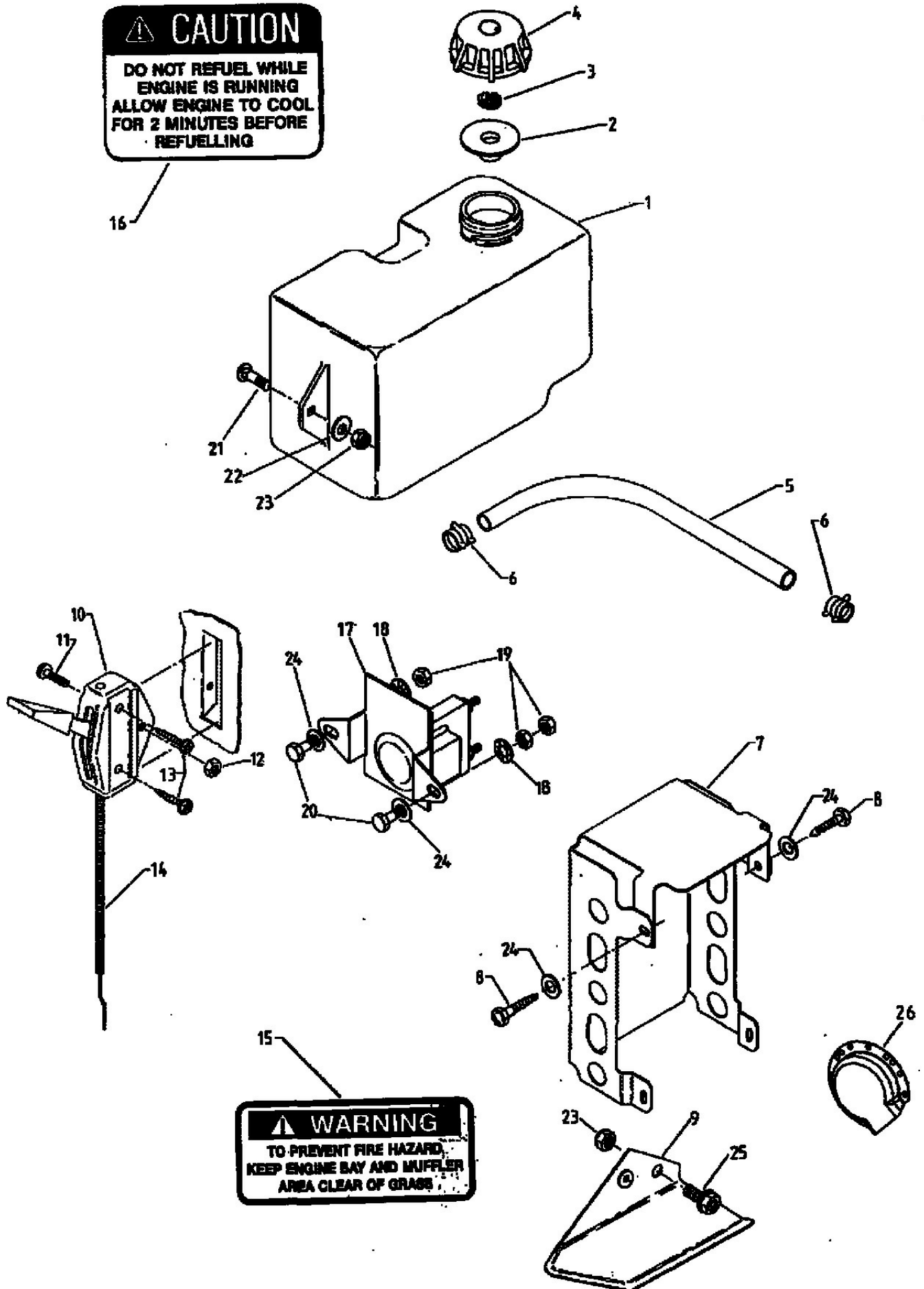


CAUTION

DO NOT REFUEL WHILE
ENGINE IS RUNNING
ALLOW ENGINE TO COOL
FOR 2 MINUTES BEFORE
REFUELLING



WARNING

TO PREVENT FIRE HAZARD,
KEEP ENGINE BAY AND MUFFLER
AREA CLEAR OF GRASS