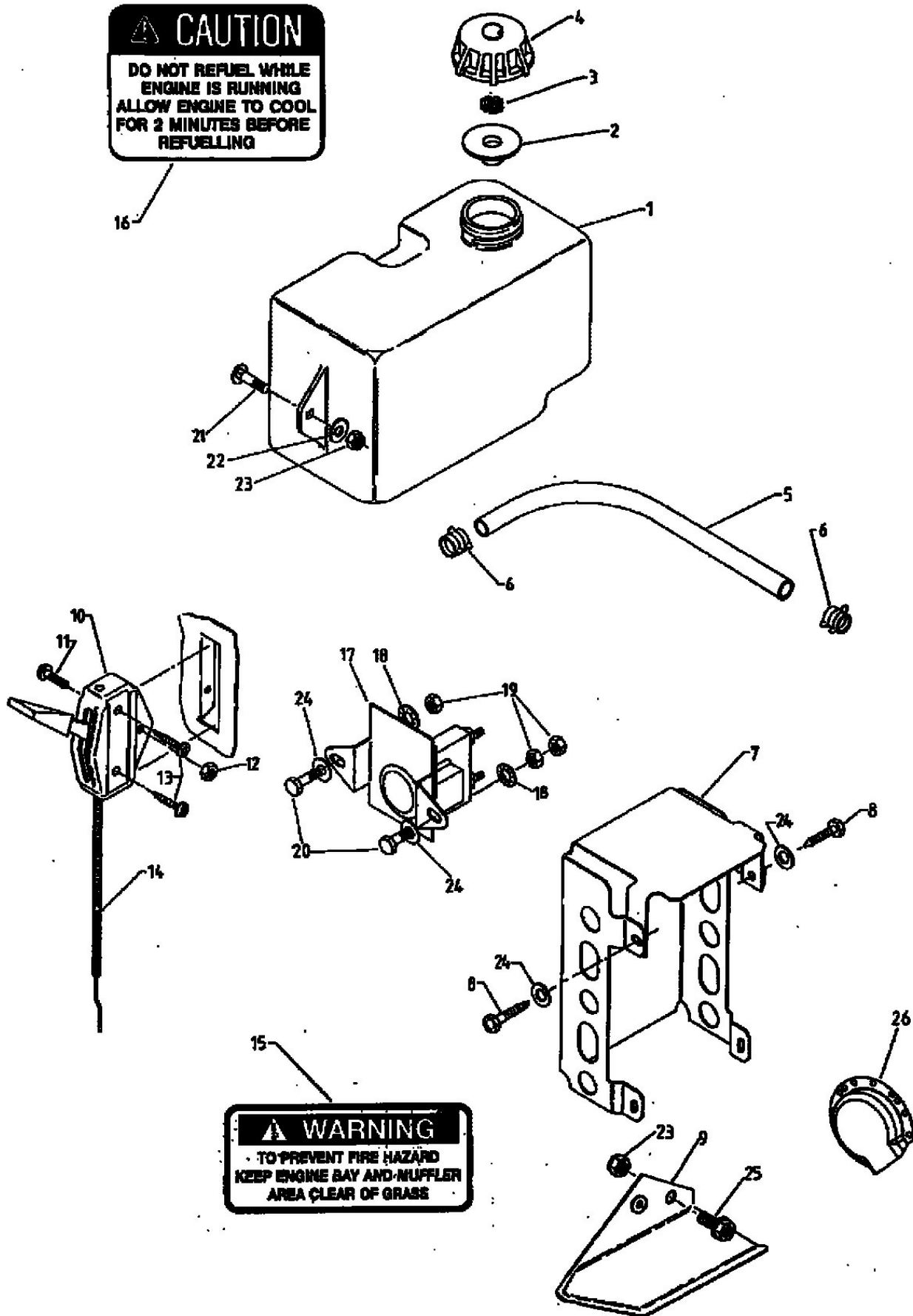


**CAUTION**  
DO NOT REFUEL WHILE  
ENGINE IS RUNNING  
ALLOW ENGINE TO COOL  
FOR 2 MINUTES BEFORE  
REFUELLING



**WARNING**  
TO PREVENT FIRE HAZARD  
KEEP ENGINE BAY AND MUFFLER  
AREA CLEAR OF GRASS